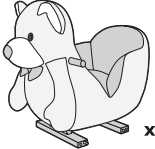

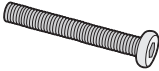

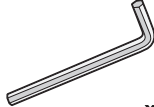
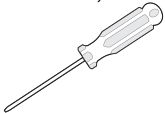
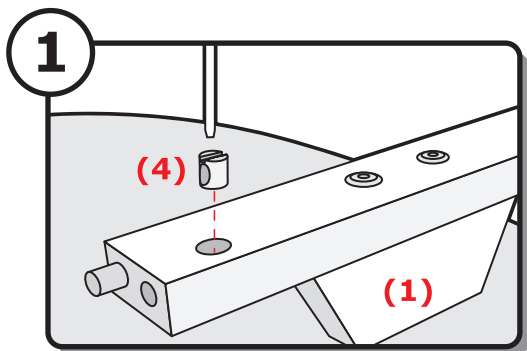




BABY ROCKER PRODUCT MANUAL

PARTS AND TOOLS LIST

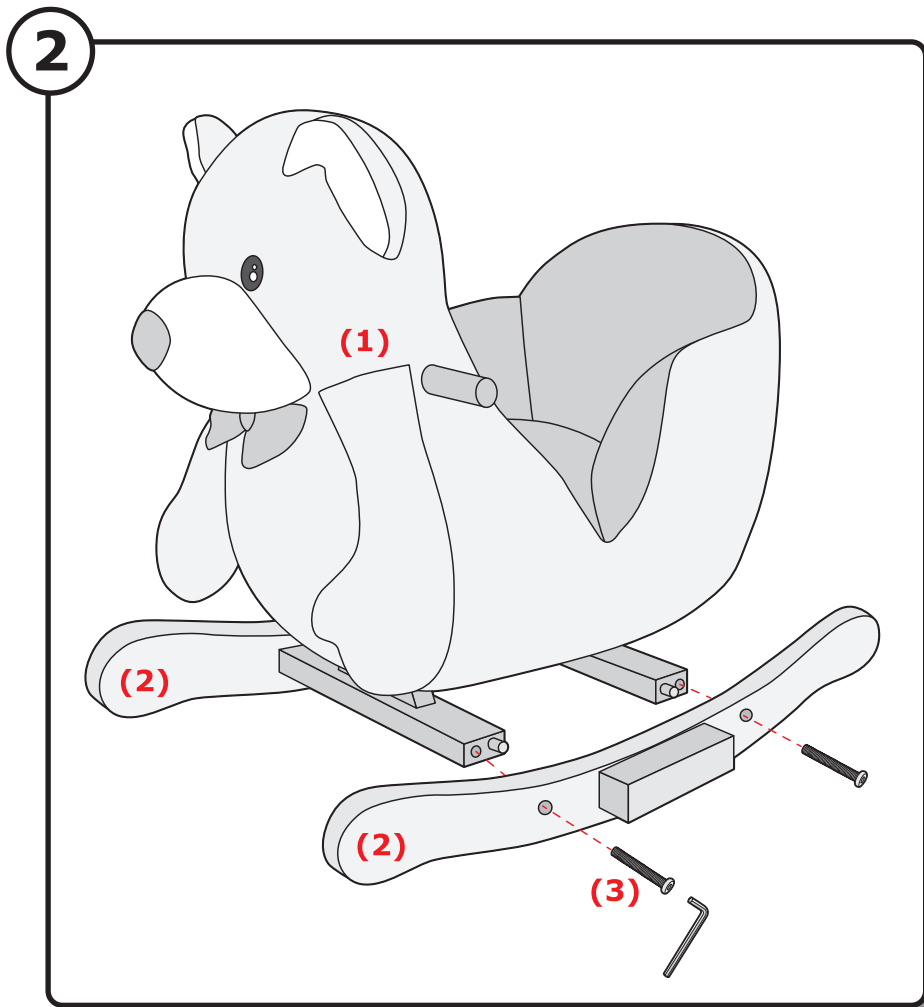
1) Body (Body design may vary)  x1	2) Rocker  x2	3) Screw  x4	4) Cross Dowel  x4	Tools Required for Assembly (included)  x1	Tools Required for Assembly (not included) 
--	--	---	---	---	--



Step 1:

Insert cross dowels (4) into holes in the horizontal supports on the bottom of the body (1). Be sure the end with the slot for a flat-head screwdriver faces out. With a screwdriver, turn the cross dowels (4) so that

the hole in the cross dowel aligns with the hole in the side of the horizontal support.



Step 2:

Align the rocker (2) with the holes in the sides of the horizontal supports on the bottom of the body (1). Insert the screws (3) into the holes and tighten with the included hex tool.

Step 3:

Repeat for the other side. Make sure all hardware is securely tightened before the child rides the toy.

WARNING

- **PARENTS: MONITOR YOUR CHILD'S PLAY ACTIVITY TO ENSURE PROPER AND SAFE USE OF THIS PRODUCT.**
- **REMOVE ALL PACKAGING, CLIPS, STAPLES, TIES AND SIMILAR ATTACHMENTS BEFORE GIVING THIS TOY TO A CHILD, AS THESE ATTACHMENTS POSE A POTENTIAL CHOKING HAZARD AND ARE NOT PART OF THE TOY.**
- **ADULT ASSEMBLY IS REQUIRED.**
- **PARENTAL SUPERVISION IS REQUIRED.**
- This product is designed for a child at least 12 months old and weight not exceeding 40 lbs (18.1 kgs).

- Allow only one child on the product at a time.
- Never allow the child to play with the product near roadways, streets, swimming pools, hills, sloped driveways, ramps, steep inclines, or stairs. Use only on a level surface.
- Always wear shoes while riding.
- Do not allow another child to push the product when a child is sitting on it.
- Do not allow the child to stand on the product.
- The child should always sit in the forward facing position.
- Inspect toy periodically for loose or damaged components.

ELECTRONIC FEATURES

Please note: For best performance of electronic features, we recommend replacing the batteries that came with this product with brand new alkaline batteries.

SOUND EFFECTS

The sound effects are activated by pressing any of the four colored shapes on the back of the head. Pressing the button again will stop the song. If the sound becomes distorted please replace the batteries as outlined in the Battery Replacement section of this manual.

BATTERY REPLACEMENT

The battery compartment is located on the bottom of its stomach. You will need a small Phillips screwdriver to open the compartment. When you are finished replacing the batteries securely fasten battery cover and screw.

WARNING

- 1) Only an adult should replace batteries.
- 2) When changing the batteries, the screw that secures the battery compartment should be kept away from children as it poses a potential choking or inhalation hazard.
- 3) Remove exhausted batteries and dispose of properly.
- 4) This toy uses 2AA batteries.
- 5) Install batteries correctly observing the polarity (+,-) signs.
- 6) We recommend use of alkaline batteries for optimal performance of electronic features.
- 7) Do not mix old and new batteries.
- 8) Do not mix alkaline, standard (Carbon-Zinc), and rechargeable (Ni-Cad) batteries. Only batteries of the same or equivalent type as recommended are to be used.
- 9) Remove the batteries if the toy will not be in use for an extended period of time.

Care and Maintenance

- Verify that all nuts and screws are properly secured prior to use.
- Product may be cleaned with a mild household detergent and warm water.
- Do not place near stairways, wall heaters, fireplace or any source of extreme heat.
- Check all parts for cracks, cuts and/or excessive wear. Replace as necessary.
- Any contact with moisture or liquid may damage the electronics.
- Occasionally check to see that all nuts and screws are tight and secure. Tighten with tool as necessary.
- If the sound is not operating correctly, replace the batteries.
- Make sure all hardware is securely tightened before the child rides the toy.

This product conforms to ASTM-F963. Standard Consumer Safety Specifications on Toy Safety. This instruction manual contains assembly instructions, safety and maintenance tips.

PLEASE KEEP THIS MANUAL FOR FUTURE REFERENCE

Tek Nek Toys International, Inc.
1904 Industrial Blvd., Ste. 100-101
Colleyville, TX 76034 USA
1-888-900-0155
customerservice@teknektoys.com

Made in Jurong, China.

www.myrockinrider.com

WARNING :

ADULT ASSEMBLY REQUIRED.

THIS PACKAGE CONTAINS SMALL PARTS WHICH HAVE HAZARDOUS SHARP POINTS IN THE UNASSEMBLED STATE. CARE SHOULD BE TAKEN IN THE UNPACKING AND ASSEMBLY OF THIS TOY.

WARNING :

ANY RUBBER BANDS, PLASTIC SECURING BANDS, WIRE TIES AND TAGS, USED IN THIS PACKAGING ARE NOT PART OF THIS PRODUCT AND SHOULD BE REMOVED FOR YOUR CHILD'S SAFETY. ANY CONTACT WITH MOISTURE OR LIQUID WILL DAMAGE THE ELECTRONICS. COLORS AND DECORATIONS MAY VARY.